

SBV SERIES FLANGED CAST IRON BALL VALVE BODY

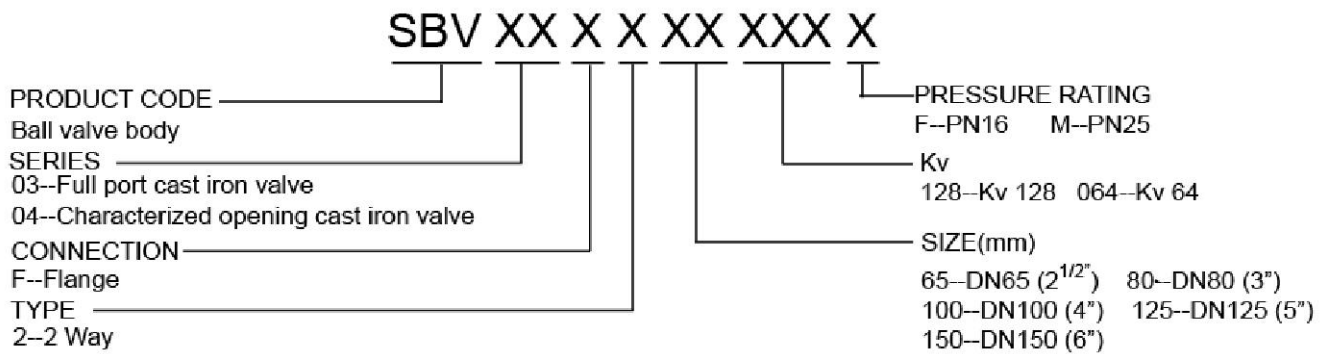
DESCRIPTION

SBV series flange casting iron ball valve bodies are widely used to control water flow in HVAC system. They have SBV03 full port type and SBV04 characterized opening type. The sizes of flanged valve body from DN 65 to DN150 are matched with SBA05 and SBA06 series actuators.



ACTUATOR APPLICATION	VALVE SIZE	ACTUATOR CONNECTION
SBA05	DN65, DN80, DN100	Screw cap & bolt
SBA06	DN125, DN150	Bolt

MODEL SELECTION



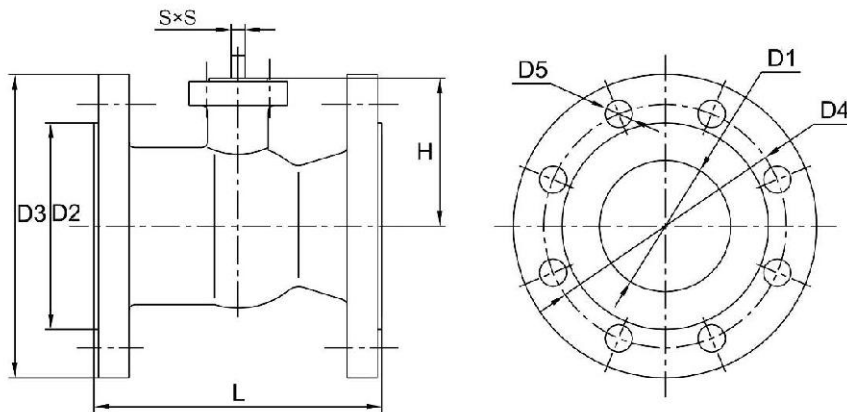
TECHNICAL DATA

MODEL	TYPE	FLOW RATE		SIZE	CLOSE OFF PRESSURE (MPa)	RATED BODY PRESSURE (MPa)
		Kv	Cv			
SBV03F265128F(M)	2-way full port	128	150	DN65	0.6	1.6 (2.5)
SBV04F265064F(M)	2-way characterized. opening	64	75			
SBV03F280136F(M)	2-way full port	136	159	DN80		
SBV04F280102F(M)	2-way characterized. opening	102	119			
SBV03F2100218F(M)	2-way full port	218	255	DN100		
SBV04F2100163F(M)	2-way characterized opening	163	190			
SBV03F2125274F(M)	2-way full port	274	320	DN125		
SBV04F2125260F(M)	2-way characterized opening	260	304			
SBV03F2150507F(M)	2-way full port	507	593	DN150		
SBV04F2150416F(M)	2-way characterized opening	416	487			

MATERIALS & TECHNICAL DATA

MATERIAL	VALVE BODY	HT250
	BALL	304 Stainless steel
	VALVE SEAT	PTFE
	VALVE STEM	304 Stainless steel
	O-RING	EPDM
WORKING TEMP.		Chilled/hot water, ≤50% glycol
MEDIA TEMP.		-10 ~ 120°C

DIMENSIONS (MM)



DIMENSIONS		L	H	D1	D2	D3	D4	D5	S×S	QTY OF FLANGE HOLES	HOLE THREAD
DN65	PN16	190	98	82	120	185	145	18	9×9	4 / 8	M16
	PN25										
DN80	PN16	190	98	82	136	200	160	18	9×9	8	M16
	PN25										
DN100	PN16	230	108	102	156	220	180	18	9×9	8	M16
	PN25				162	235	190	23			M20
DN125	PN16	254	115	125	188	250	210	18	12×12	8	M16
	PN25				270	220	26	M24			
DN150	PN16	267	133	154	210	285	240	22	12×12	8	M20
	PN25				215	300	250	26			M24

INSTALLATION & ADJUSTMENT

SBV series 2-way valve is matched to SBA series actuator. Please notice that the mark “—” on valve stem as the following figure indicates the port's flow direction is the same as the ball's flow direction. And make sure the Installation Mark is matched with the slot on the actuator stem.

